

WorkTM

ideas

THE LATEST
IN BATHROOM
INSPIRATION



robertson
design.ideasTM

ROBERTSONDESIGNIDEAS.CO.NZ

Cover Feature:
ZUCCHETTI SABLIER

SPRING
EDITION
2024



alice

MILANO, ITALIA

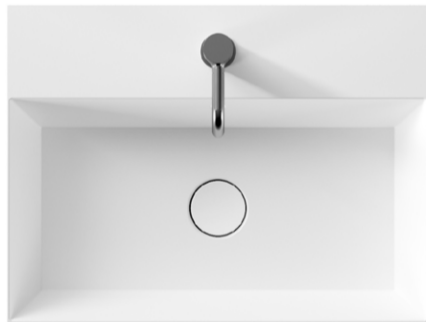
Alice Ceramica introduces SPY. A practical, design driven collection ideal for those who want all the design and innovation of Alice combined with the space-savvy functionalist approach of Nordic architecture.

SPY

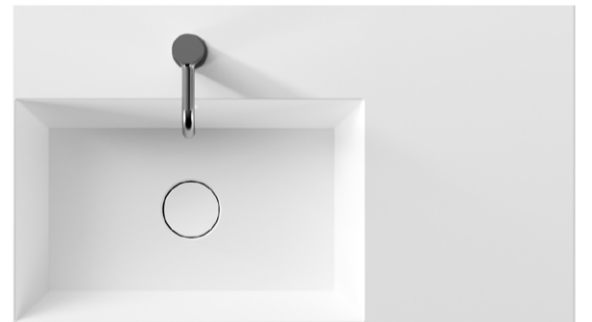
400(L) x 300(W) x 110(H)



610(L) x 460(W) x 135(H)



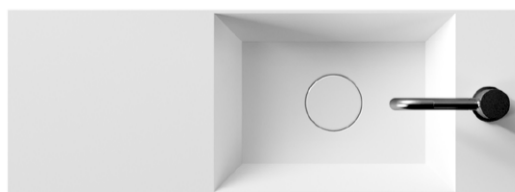
810(L) x 460(W) x 135(H)



450(L) x 200(W) x 110(H)



750(L) x 270(W) x 110(H)



Available in 18 finishes

GLOSS
WHITE



MATT
WHITE



MATT
BLACK



MATT
COFFEE



MATT
GREY



MATT
SAND



MATT ALPINE
GREEN



MATT
ROSE



TABASCO



MYRTLE



PYNE



HONEY





Designer
Massimiliano Braconi

Born in 1974, Award winning Italian designer Massimiliano Braconi founded his own design studio in 2000 in Viterbo, working on projects with international companies as a designer, art director and artist.

Braconi describes his continually evolving style as that of an “unconventional, visionary artist”. He brings his utopian ideas to life in the widest, most liberating sense possible, advancing his art in the constant pursuit of an aesthetic that shapes the authentic experience of the individual. His continual search for uncommon visual and sensory concepts blends art with design, creating his very own, pure, visual language unfettered by the influence of more familiar forms of expression.

1010(L) x 460(W) x 135(H)



Functionality and practicality.
Washbasins particularly
suitable for projects with limited
spaces and for bathrooms that,
despite their size, do not want
to sacrifice design.

- GOLD
- PLATINUM
- CARRARA
- MARQUINIA
- BRONZE
- AMAZON



PAN
design Ludovica Serafini
and Roberto Palomba

At its inception, the Pan collection radically transformed the concept of the cylindrical single-lever mixer, embracing a bold and innovative approach drawing inspiration from nature.

Drawing inspiration from the organic world, the mixer's body mimics the elegance of a tree trunk, while the spout and lever gracefully emerge like branches, reminiscent of natural grafting.

Brushed Chocolate Finish

The P21 PVD Brushed Chocolate finish is a brushed finish in a warm, extremely trendy and sophisticated chocolate tone, suitable for any setting.

PVD finishes are extremely hard and resistant, enduring over time and nontoxic. They are therefore particularly suitable for the hotel industry. Furthermore, the production cycle is totally environmental impact free.

Contact us for availability
designideas@robertson.co.nz

Single lever basin mixer
Brushed Chocolate



2 tap hole basin mixer, high spout
Brushed Chocolate



LINES OF NATURE SALONE INTERNAZIONALE DEL MOBILE 2024



2 tap hole wall mounted basin mixer
Brushed Chocolate

ZUCCHETTI.

3 tap hole wall mounted basin mixer
Matt Stainless Steel



SABLIER
design Monica Armani

Sablier is a new collection of stainless steel mixers envisioned by the design studio Monica Armani.

Using AISI 316L steel as its main material, this collection introduces a unique and different treatment of steel.

While steel is conventionally associated with rigid, angular forms, with Sablier, it is sculpted with remarkable delicacy, infusing each element with fluidity and grace, alongside a pleasing softness to the touch.

The contours evoke the silhouette of an hourglass, from which the collection draws its name – a timeless symbol, representing the effects of passing time.

Contact us for availability
designideas@robertson.co.nz



Single lever basin mixer, extended spout
Brushed Stainless Steel,
Matt British Gold PVD,
Matt Copper PVD



PROJECT FEATURE

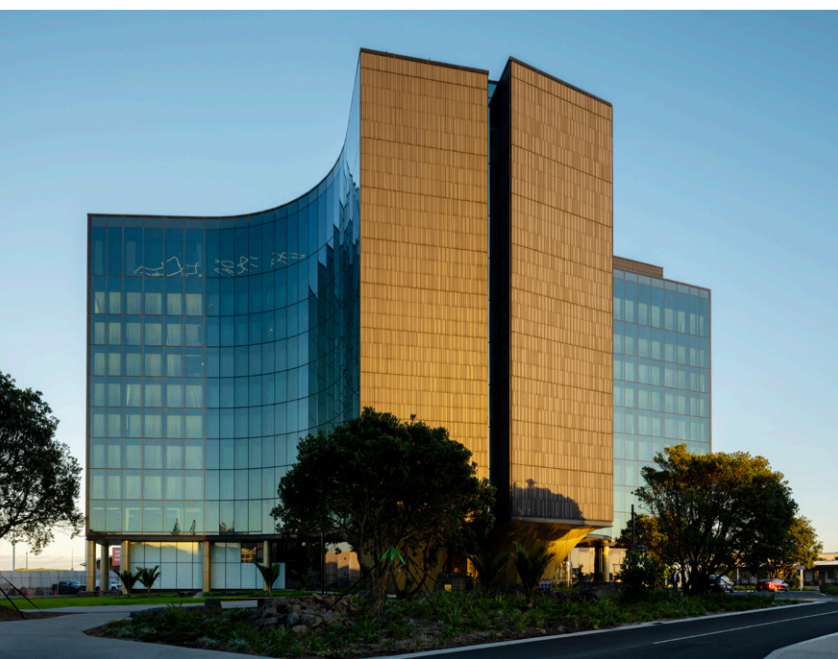
ARCHITECT
WARREN & MAHONEY

DESIGNER
SPACE STUDIO

PHOTOGRAPHY
SIMON DEVITT

TE ARIKINUI PULLMAN
AUCKLAND AIRPORT

COMBINING
LIFESTYLE
AND DESIGN,
FOR BUSINESS
AND LEISURE



FEATURED PRODUCTS



ELEMENTI
ION EXTENDED
HEIGHT BASIN
MIXER
BRUSHED NICKEL:
44252.04



ELEMENTI
ION SHOWER
MIXER
BRUSHED NICKEL:
44270.04



ELEMENTI
SPLASH PLUS
SQUARE SLIDE
SHOWER
BRUSHED NICKEL:
40332.04



ELEMENTI
SPLASH PLUS
SQUARE
REAR INLET
COLUMN SHOWER
BRUSHED NICKEL:
40333.04

A stone's throw away from the bustling Auckland International Airport, Te Arikiniui Pullman Auckland Airport represents a new way to travel, while acknowledging the region's cultural heritage. This premium five-star hotel is an immersive experience that begins the moment you cross the threshold.

With the narrative, 'Sea to Sky', the architecture of Te Arikiniui is a testament to the rich cultural tapestry of Aotearoa. Drawing inspiration from the land, sea, and sky, the hotel's design is reflective of Auckland's history and culture. Spaces throughout Pullman Auckland Airport are designed to offer guests a sense of place that is distinctly Aotearoa.

The design concept, 'Sea to Sky,' pays homage to the adventurous spirit of the Tainui people. The journey from the fertile soils of Manukau to the expansive Northern Waikato is reflected in the subtle transitions within the hotel, from the earthy tones of the lower floors to airy lightness at the upper levels.

The Robertson Design Ideas' team are proud to have collaborated with Warren and Mahoney and Space Studio on this project. Each of the 311 rooms have bathrooms created to the high standard expected of international luxury accommodation.

The bathrooms feature Ion Tapware by Elementi. With Ion's elongated lines, we chose to pair the Splash Plus Square Column Shower, whose square design harmonises with the Ion range. Both Collections by Elementi are modern, while being versatile enough to suit the aesthetics of a variety of projects.

Considering the other Elementi fixtures, the decision to use the Marzo Freestanding Bath made a lot of sense. Again, choosing Marzo with its clean lines and gently angled profiles, helped to create a relaxed contemporary feel in the bathrooms.

To create a statement, Tondo Column Basins by Parisi were chosen as they are noticeably luxurious, while remaining cohesive with the direction of the design.

Te Arikiniui Pullman Auckland Airport has been created to enhance the experience of the weary traveller. Whether you're beginning an adventure or concluding one, this hotel promises a premium and memorable stay.

AWARDS:

NZIA COMMERCIAL ARCHITECTURE
WINNER

NZIA INTERIOR ARCHITECTURE
WINNER

INTERIOR AWARDS HOSPITALITY
FINALIST

HOTEL DESIGN - ASIA PACIFIC AWARD
SHORTLISTED

ASIA PACIFIC PROPERTY AWARDS
BEST HOTEL INTERIOR FOR NEW ZEALAND

**TE ARIKINIUI
PULLMAN
AUCKLAND
AIRPORT**



HIDRA
**GIO EVOLUTION 600
INSET BASIN**
GLOSS WHITE:
27426.10



ELEMENTI
**32MM BASIN
CLICKER WASTE**
BRUSHED NICKEL:
79165.04



ZUCCHETTI
**PAN
FREESTANDING
BASIN MIXER**
MATT BLACK:
ZP6251.N1



PARISI
TONDO COLUMN BASIN
GLOSS WHITE:
CS207



PARISI
**LINFA WALL HUNG
TOILET PAN**
MATT WHITE
VITREOUS CHINA:
PN780

PARISI
**BLADE MECHANICAL
PUSH PLATE**
GUN METAL:
PA231.29

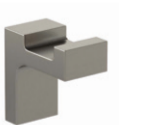


ELEMENTI
ION BATH COLUMN
BRUSHED NICKEL:
44285.04



ELEMENTI
**MARZO ACRYLIC
FREESTANDING BATH**
GLOSS WHITE ACRYLIC:
52563.10

ELEMENTI
**ELETECH
ROBE HOOK**
BRUSHED NICKEL:
60715.04



ELEMENTI
**ELETECH TOILET
ROLL HOLDER**
BRUSHED NICKEL:
60717.04



ELEMENTI
**ELETECH
TOWEL RAIL**
BRUSHED NICKEL:
302MM: 60731.04
607MM: 60720.04



A Toilet Suite for the Kids: GooGai by Cotto



Cotto's GooGai toilet suite is designed specifically for kids, with hygiene and durability in mind. It features UltraClean+, an innovative technology that eliminates 99% of bacteria and dirt in 24 hours, making it easy to clean and maintain. The GooGai toilet has a low height of 305mm, which is ideal for children aged 3 to 12 years, as it allows them to get on and off the seat without difficulty.

Choose between White, Pink or Blue Cistern lids. The toilet comes with Gloss White Lid as Standard (blue and pink are additional purchase and not included).

GLOSS WHITE:
C15027AU



OPTIONAL EXTRA:
INTERCHANGEABLE
CISTERN LID



GLOSS PINK:
C7082XX0011054



GLOSS BLUE:
C7082XX0011053

COTTO

A

SHOWROOMS

AUCKLAND

ROBERTSON

25 Vestey Drive, Mt Wellington
Ph: (09) 573 0490

Open Monday to Friday 8am - 5pm
Saturday 9am - 2pm
Closed Sunday

KITCHEN THINGS | LUXURY COLLECTION

26 Morrow Street, Newmarket
Ph: (09) 522 8375

Open 7 days 10am - 6pm

W

WELLINGTON

ROBERTSON

23 Marion St, Te Aro
Ph: (04) 595 1165

Open Monday to Friday 8.30am - 5pm
Closed Saturday and Sunday

For a bathware consultation please make an appointment by emailing sales@robertson.co.nz

C

CHRISTCHURCH

HOME IDEAS

37 Mandeville Street Riccarton
Ph: (03) 348 2863

Open Monday to Friday 9am - 4pm
Saturday 10am - 2pm
Sunday 10am - 2pm

Request our latest brochures...



Our latest IDEAS brochure is packed full of innovative product and great design. Request your FREE copy now!

sales@robertson.co.nz

robertson[®]
BATHWARE
— SINCE 1987 —

PH: +64 9 573 0490
FAX: +64 9 573 0495
EMAIL: sales@robertson.co.nz

ROBERTSON.CO.NZ